

CRUN

C R U N L T D

SICHUAN CRUN POWER EQUIPMENT CO., LTD

CRUN committed to Customer's Trust, Employee's Happiness and Products' Global satisfaction.

CATALOG

- ABOUT CRUN
- MAIN PRODUCTS
- EQUIPMENT CAPACITY
- QUALITY ASSURANCE



CHENGDU BASE

No.85, 6th Gangbei Road, Modern Industrial Park, Chengdu City, Sichuan Province, China, covering an area of 150,000 m² and a production area of 55,000 m².



Manufacturing Base
in Chengdu



Manufacturing Base
in HuaDong

ZIGONG BASE

No.1, Rongchuan Road, High-tech Zone, Zigong City, Sichuan Province, China, covering an area of 280,000 m² and a production area of 200,000 m².



Manufacturing Base
in ZiGong

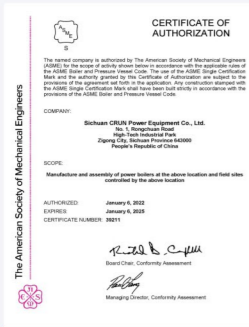
ABOUT US

SICHUAN CRUN POWER EQUIPMENT CO., LTD (formerly Dongfang Boiler Equipment Manufacturing Co., Ltd.) was established in 1978 and is a wholly-owned subsidiary of Sichuan CRUN Co., Ltd (stock code: 002272), referred to as "CRUN". CRUN is engaged in the R&D, design and manufacture of various types of WHR boiler (waste heat recovery), biomass boiler, special boiler, power plant boiler, pressure vessel, boiler auxiliary machinery, etc., and has more than 40 years of R&D, design and manufacture history of boiler and pressure vessel.

Adhering to the business philosophy of “Unite Sincerity, Enlighten Wisdom, Shared Values, Sustain Operation”, as well as the core values of “Serve Customer, Stay Diligence& Practical, Open-minded& Enterprising, Work Together to Succeed”, CRUN, as always, provides high-quality products and services to clients at home and abroad.

TECHNICAL STRENGTH

CRUN holds the Class-A Manufacturing License of boiler, and Class-A1&A2 Design and Manufacturing License of pressure vessel, and also has passed the US ASME system "U" & "S" Certification, ISO9001 Quality Management System Certification, ISO14001 Environmental Management System Certification, OHSAS18001 Occupational Health and Safety System Certification, as well as Measurement Management System Certification.



ASME S Certificate



ASME U Certificate



ISO9001 Quality Management System Certification



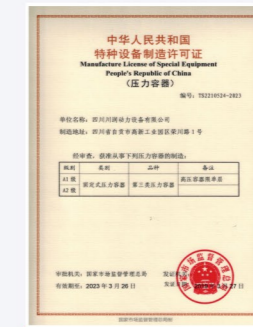
ISO14001 Environmental Management System Certification



OHSAS18001 Occupational Health and Safety System Certification



Class-A Manufacturing License of Boiler



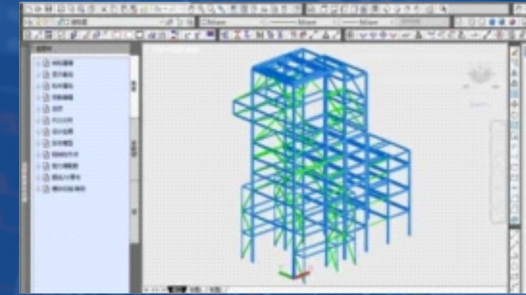
Class-A1&A2 Design and Manufacturing License of Pressure Vessel



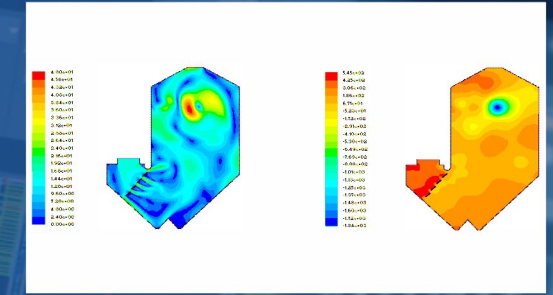
Measurement Management System Certification

TECHNICAL STRENGTH

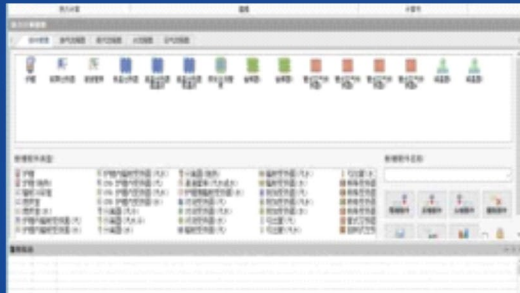
CRUN is a national high-tech enterprise with Sichuan Provincial Academician Workstation, Key Laboratory of Machinery Industry Federation and Materials Research Institute, and has established cooperative relations with the academic institutions, such as Zhejiang University, Xi'an Jiaotong University, Chongqing University, Dalian University of Technology, Sichuan University of Science & Engineering, etc., as well as possesses strong technical research and development capabilities.



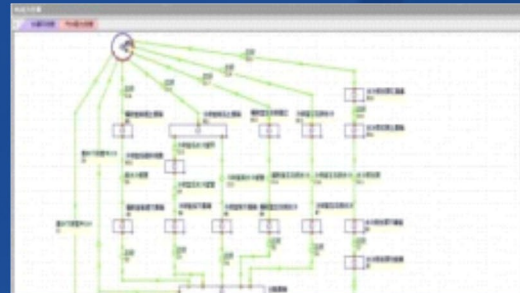
3D3S Steel Structure 3D Analysis Calculation Software



CFD Numerical Simulation



Boiler Thermodynamic Calculation Software



Water Circulation Calculation Software

There are technical departments, such as design department, process department, welding center, standardization division, quality management department, etc. CRUN Power has the domestic leading computing soft wares, such as boiler thermodynamic calculation, water circulation calculation, 3D3S steel structure 3D analysis calculation, strength calculation of pressure parts, etc., as well as various test equipment, such as material performance test, blasting test of pressure equipment and stress&strain analysis, etc., which can provide a strong guarantee for the performance and quality of the product.

MAIN EQUIPMENT CAPACITY

Blanking and Forming Equipment



Edge Planing Machine



Thick Plate CNC Cutting Machine



CNC Laser Cutting Machine



210/255 Three Rollers CNC Rolling Machine

Processing Equipment



Spindle Diameter 200mm
CNC Floor Boring Machine



Φ6300 × 4000mm CNC Vertical Lathe



1000mm Double Head Deep Hole Drill



2 × 400mm Dual Axis CNC Drill

MAIN EQUIPMENT CAPACITY

Welding Equipment



Cantilever Submerged Arc Welding Machine



Saddle Submerged Arc Welding Machine



Tube Panel Surfacing Welding Machine (pole)



Narrow Gap Automatic Welding Machine



16-head SAW Automatic Welding Machine



Submerged Arc Automatic Welding Center



All-position Digital Pulse Argon Arc Welding Machine



Tube/Tube Panel All Position Digital Pulse TIG Welding Machine

MAIN EQUIPMENT CAPACITY

Surface Treatment Equipment



Heat Treatment Equipment



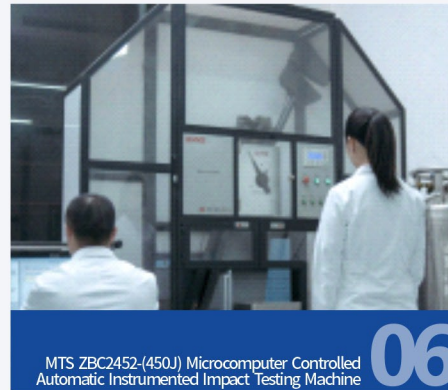
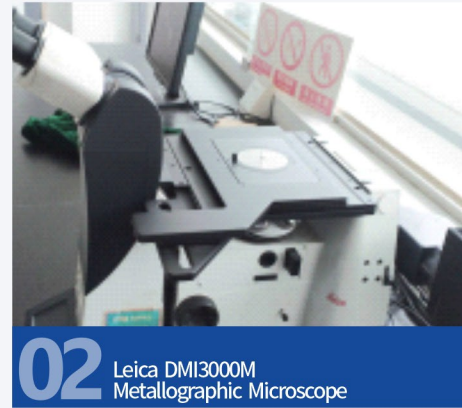
Lifting Equipment



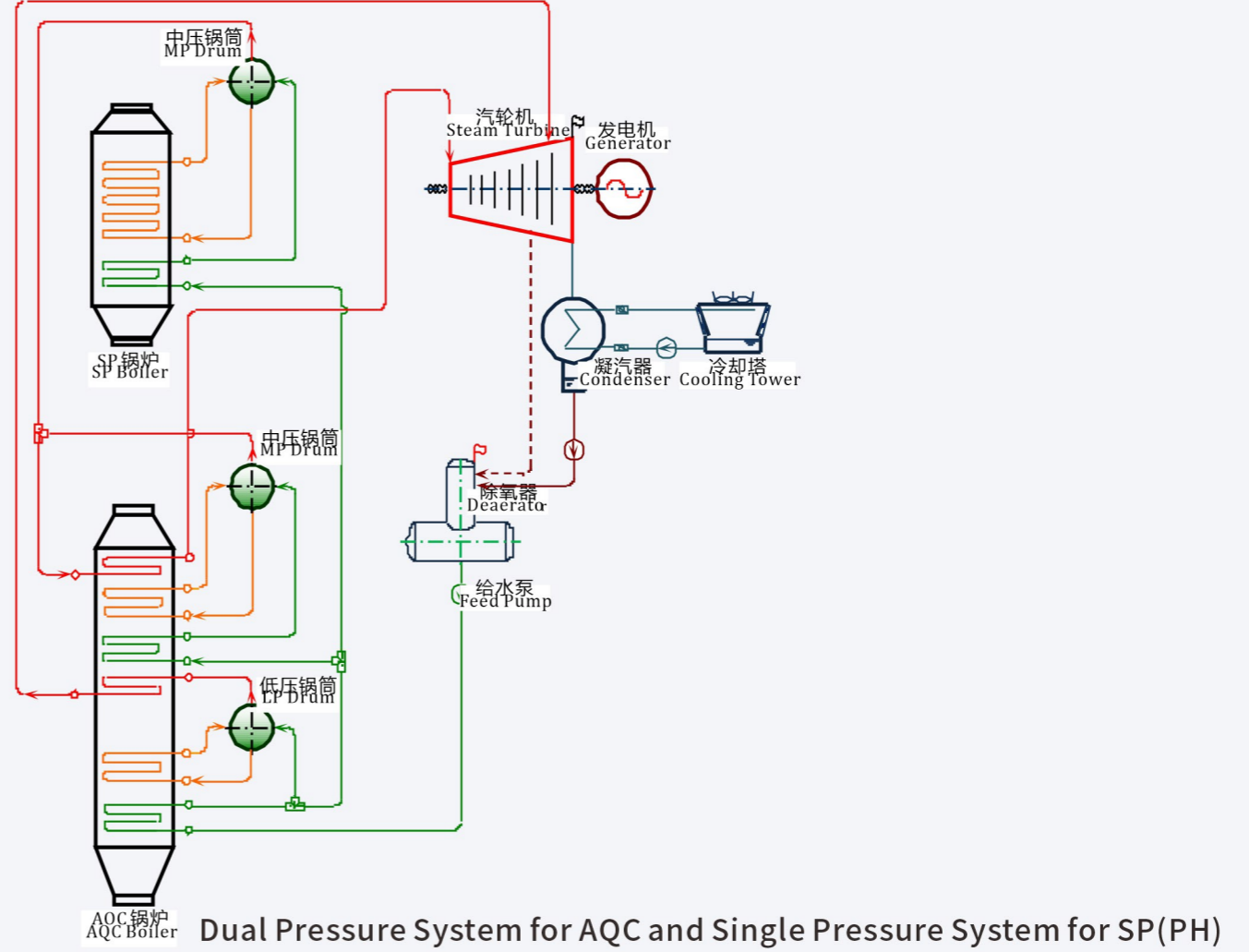
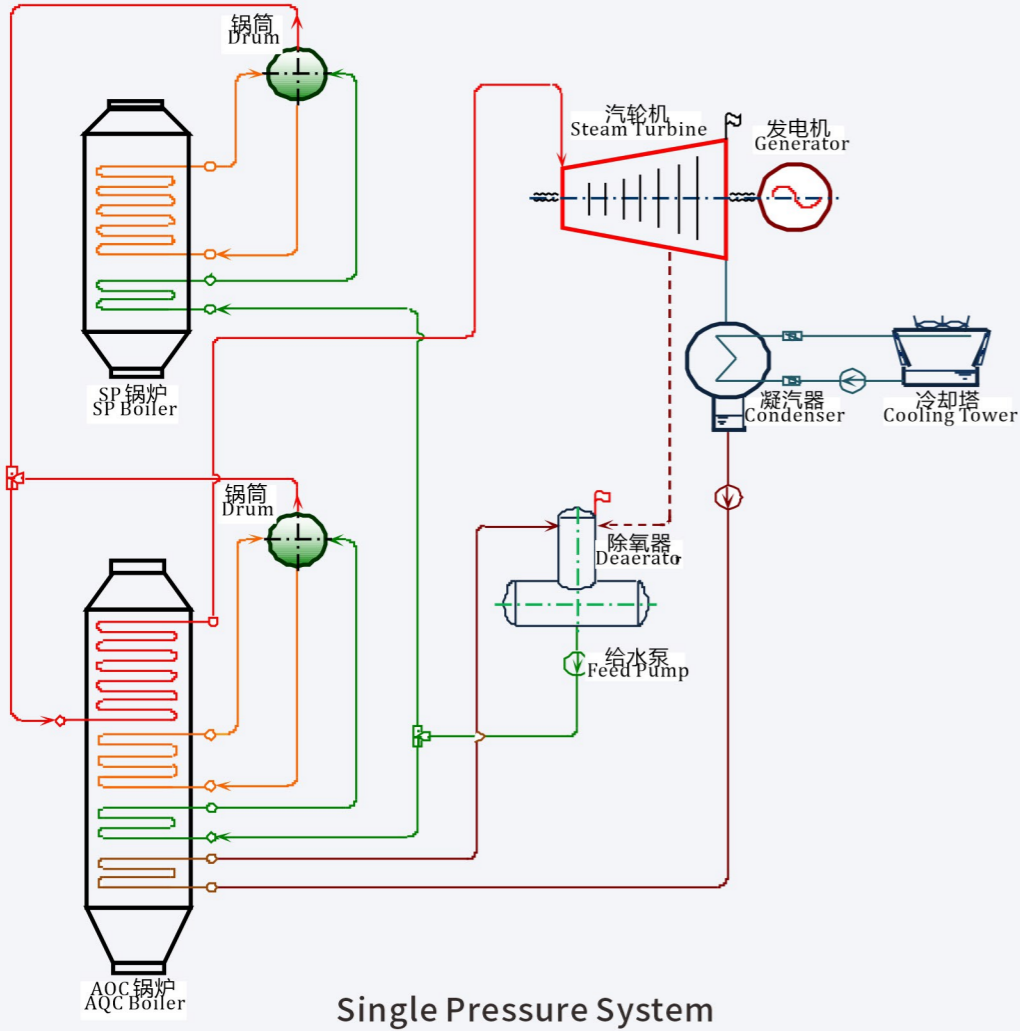
Inspection Equipment



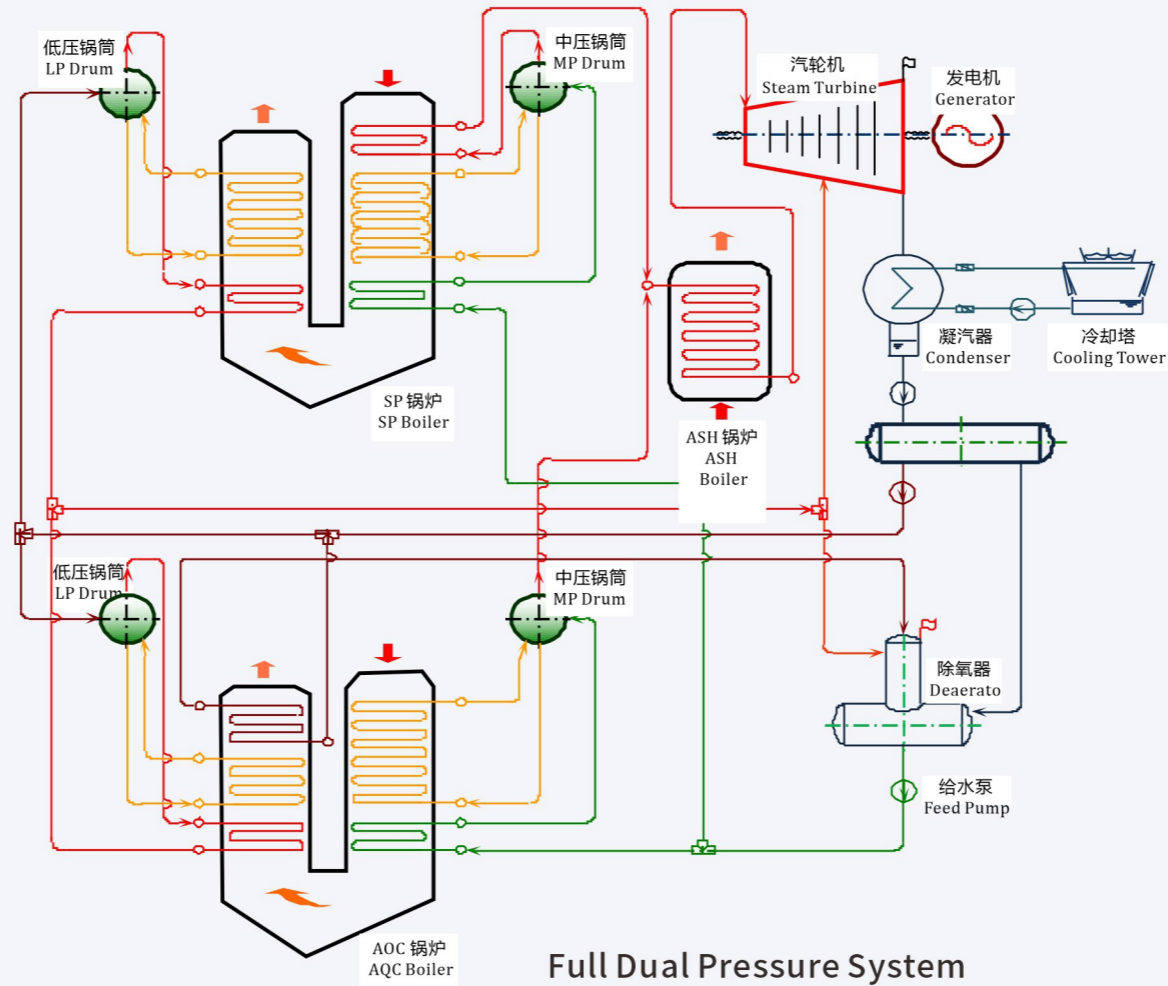
TEST CAPACITY



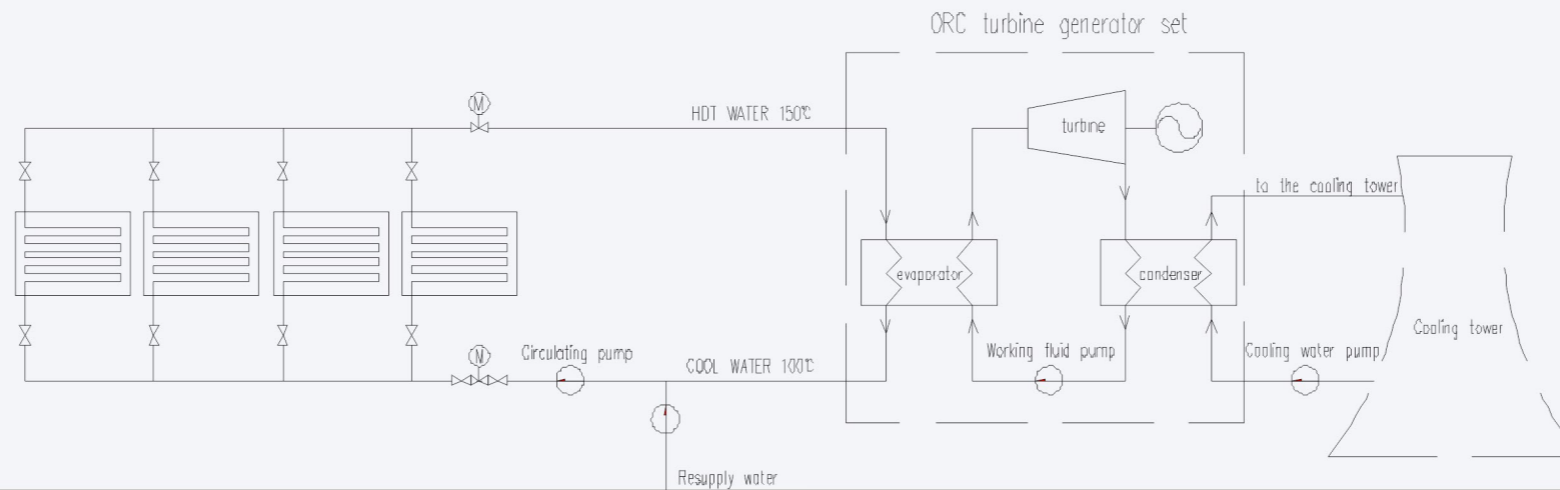
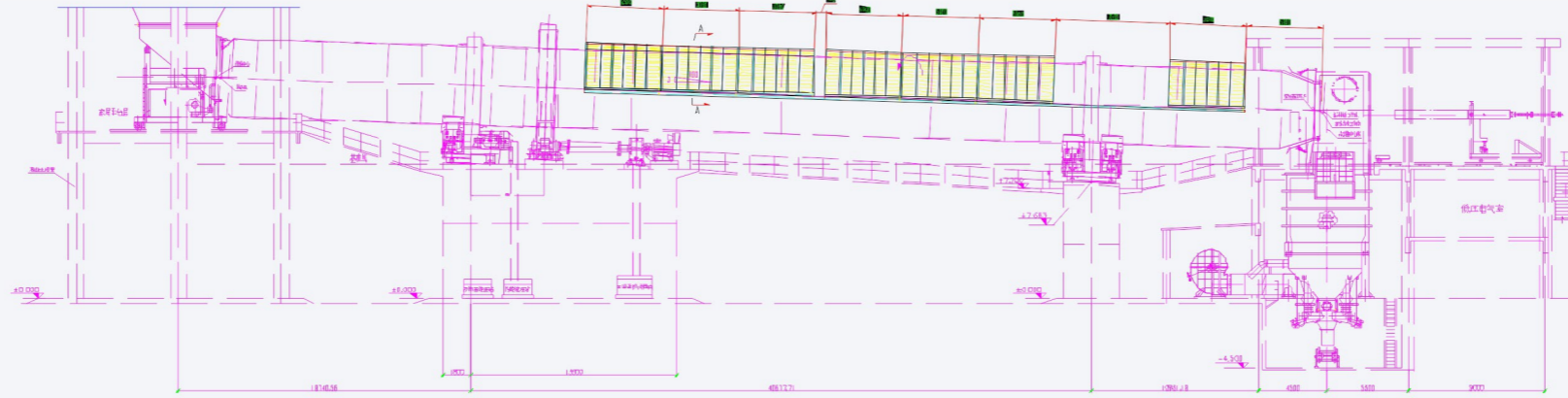
Waste Heat Recovery Boiler for Cement Kiln



Waste Heat Recovery Boiler for Cement Kiln



Waste Heat Recovery Boiler for Cement Kiln



Cement Kiln Waste Heat Recovery - ORC system

MAIN PRODUCTS

WHR Boilers for Cement Kilns in Shree Cement



WHR Boiler for
Beawar Line-2 5000
TPD Cement Kiln
Shree Cement
Limited, India



WHR Boilers for
Raipur Line-1
6500TPD Cement
Kiln
Shree Cement
Limited, India

MAIN PRODUCTS

Complete WHR System in Sanghi Cement



▼ AQC Boiler



▼ PH Boiler



▼ Alkali Bypass Boiler

WHR System (EP) for 10000TPD Cement Kiln of Sanghi Industries Limited, India

MAIN PRODUCTS

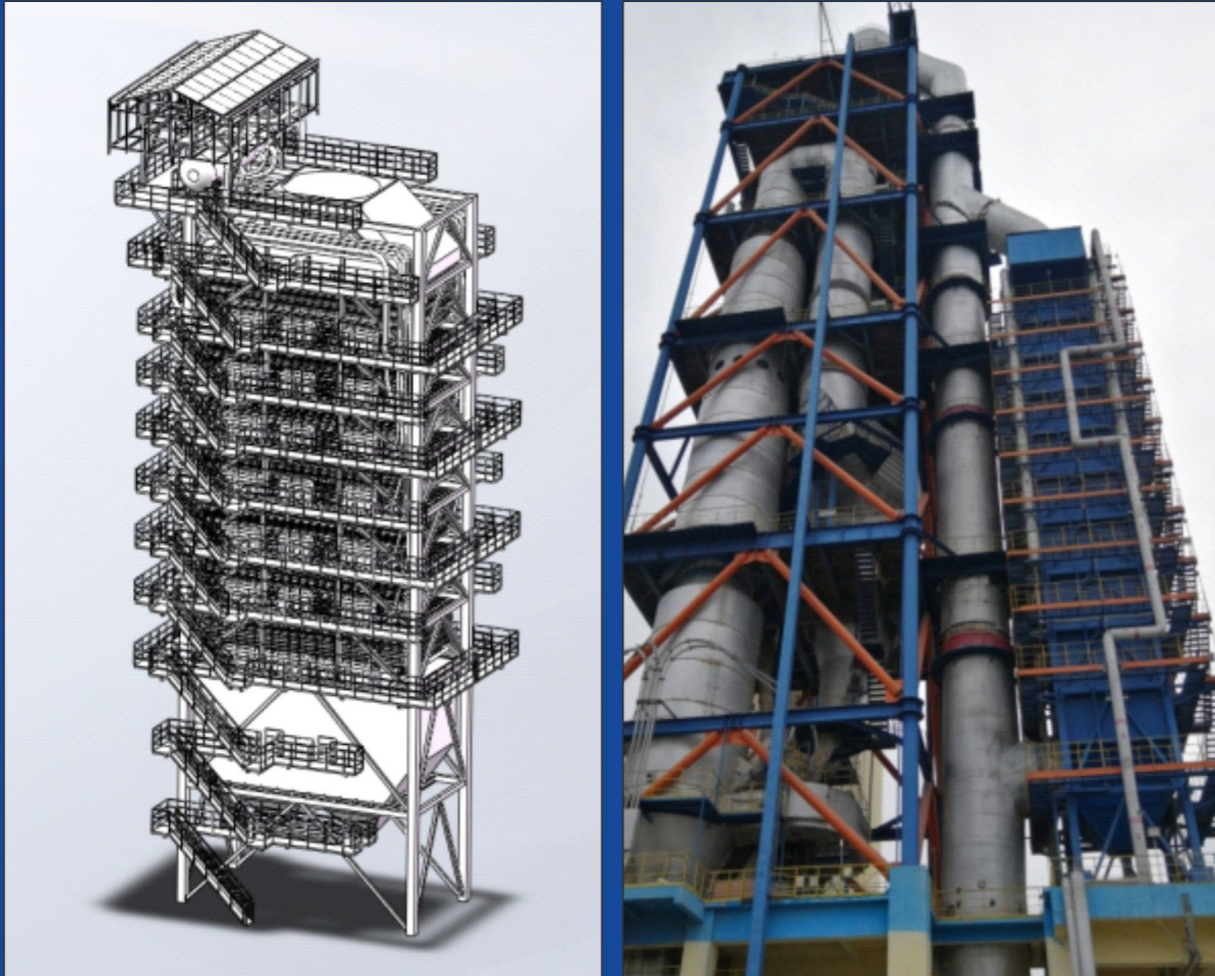
WHR Boilers for Cement Kilns in ACC Cement



▼ AQC Boiler

2 AQC+3 PH for 2x5000TPD Cement Kilns of ACC Kymore Cement Works, India

MAIN PRODUCTS



▼ PH Boiler

Scope of Application: waste heat recovery from flue gas of new dry process cement line.

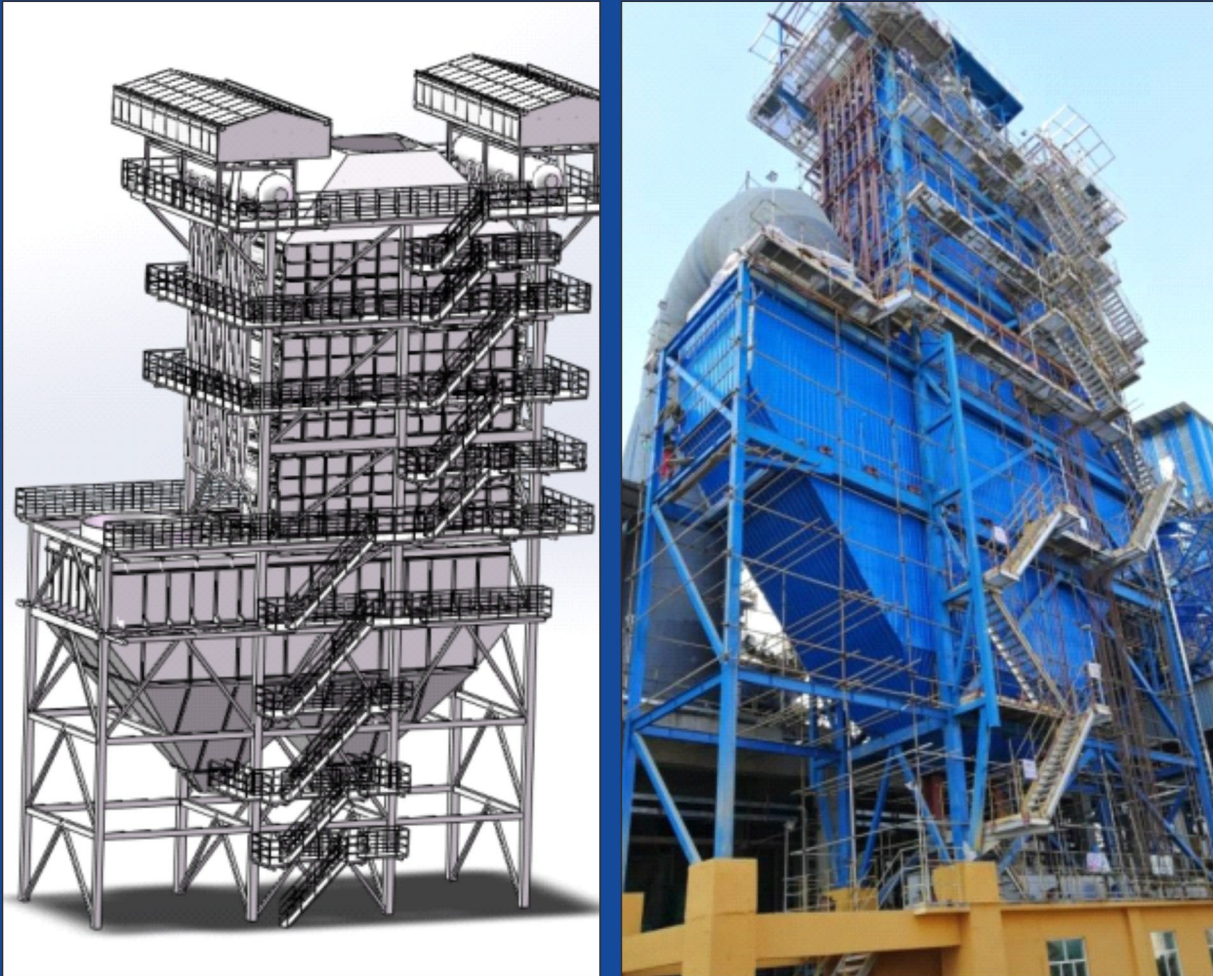
Technical Parameters: customized design of 1000~14000TPD cement line. Usually, **0.3~2.5MPa secondary medium pressure and low pressure parameters** are applicable.

Main Components: drum (including steam-water separator), superheater, evaporator, economizer, steel frame, platform, mechanical hammering, flue gas equalizing device.

Features:

- (1) When the flue gas enters the boiler, the **primary flow equalizing device** is used to make the flue gas evenly distributed.
- (2) The separation of steam and water adopts the **primary gap baffle separation + secondary corrugated plate box separation** to ensure steam quality.
- (3) The heating surface adopts **the bare serpentine tube structure**, and is equipped with **mechanical hammering to continuously clean the dust**.
- (4) The heat exchange pinch point can be customized according to user requirements, and the economic pinch point is 8~20°C.

MAIN PRODUCTS



▼ U-type AQC boiler

Scope of Application: waste heat recovery from flue gas of new dry process cement line

Technical Parameters: customized design of 1000~14000TPD cement line. Usually, **0.3~2.5MPa secondary medium pressure and low pressure parameters** are applicable.

Main Components: drum (including steam-water separator), superheater, evaporator, economizer, steel frame, platform, settling chamber, flue gas equalizing device

Features:

- (1)When the flue gas enters the boiler, the **primary flow equalizing device** is used to make the flue gas evenly distributed.
- (2)The separation of steam and water adopts the **primary gap baffle separation + secondary corrugated plate box separation** to ensure steam quality.
- (3)The heating surface adopts spiral **fin and H-finned tube structure**, and the modular design is assembled as a whole.
- (4)The heat exchange pinch point can be customized according to user requirements, and the economic pinch point is 8~15°C.

MAIN PRODUCTS

Waste Heat Recovery Boiler for Glass Kiln



▼ Waste Heat Recovery Boiler for Nanning Fufa 600 t/d Glass Line



▼ Waste Heat Recovery Boiler for Dongguan CSG900t/d Glass Line



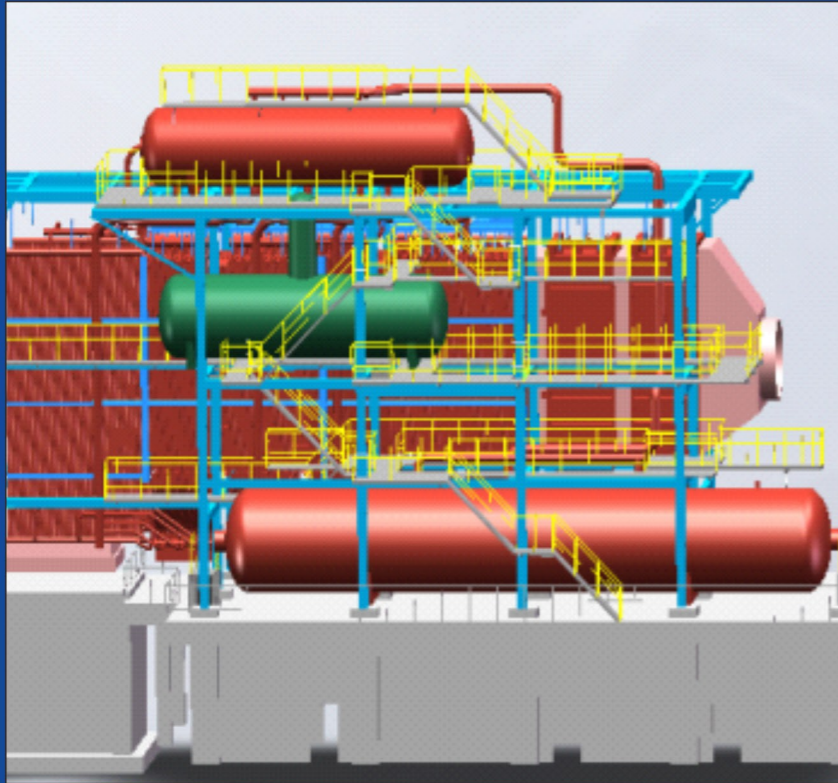
▼ Waste Heat Recovery Boiler for Weihai CSG 900t/d Glass Line



▼ Waste Heat Recovery Boiler for Wuhan Changli 1200t/d Glass Line

MAIN PRODUCTS

Waste Heat Recovery Boiler for Electric Furnace in Steel Plant



MAIN PRODUCTS

Waste Heat Recovery Boiler for Sinterer



▼ Waste Heat Recovery Boiler for Sinterer (360m²) in Weiyuan Steel

MAIN PRODUCTS

Waste Heat Recovery Boiler for Converter



▼ Shaanxi Longgang 50t Converter Waste Heat Recovery Boiler



▼ Flue type heat ex changer



▼ Shaanxi Longgang 120t Converter WHRB

MAIN PRODUCTS

Incineration Boiler for Industrial Solid Waste, Waste Liquid and Waste Gas



Waste Alkali Incineration Boiler in Shandong NHU Amino Acid Co., Ltd



Waste Liquid Incineration Boiler in Shaanxi Yanchang Petroleum (Group) Corp. Ltd



Waste Liquid Incineration Boiler in Zhongan United Coal Chemical Co., Ltd

MAIN PRODUCTS

Biomass Boiler



▼ 85t/h Bagasse Boiler in Buriram, Thailand



▼ 220 t/h Bagasse Boiler in KKSP, Thailand

MAIN PRODUCTS

Biomass Boiler



▼ 2x150t/h Bagasse Boiler in Wangsaphung, Thailand



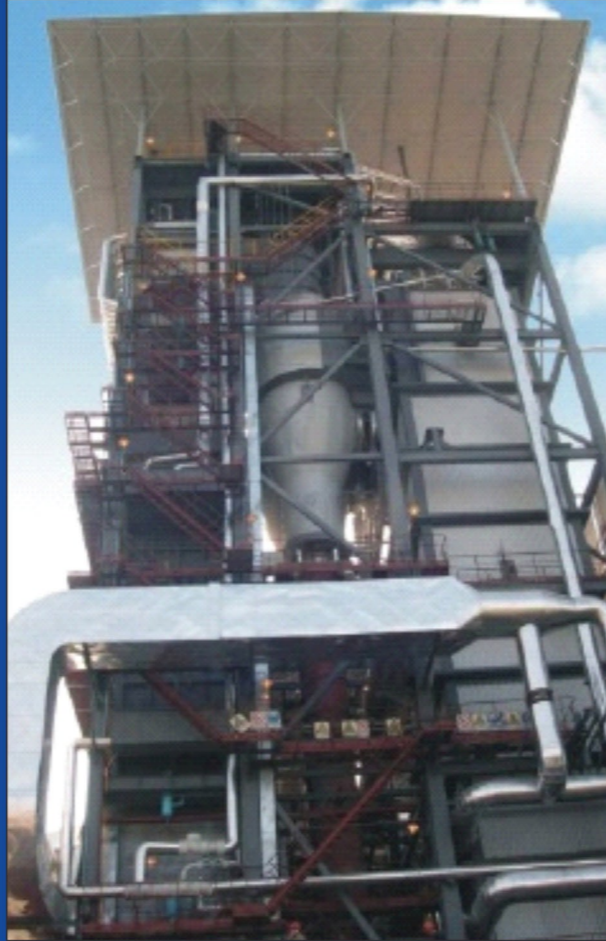
▼ 85 t/h Bagasse Boiler in Yunnan Yunxian Xingfu Sugar Industry Co., Ltd, China

MAIN PRODUCTS

CFB Boiler



▼ 60 t/hCFB Boiler in Ordos



▼ 90 t/hCFB Boiler in Zhanjiang Nongken



▼ 50 t/hCFB Boiler in Chongqing Chuanran Energy



▼ 75 t/hCFB Boiler in Guangzhou Hengyun

MAIN PRODUCTS

Refuse Incineration Boiler(WTE)



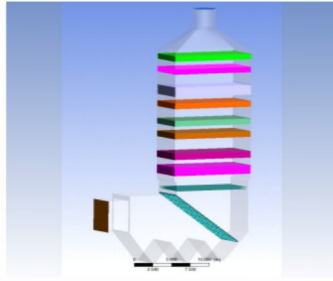
▼ 350 t/d Refuse Incineration Boiler in Wanzhou District, Chongqing City



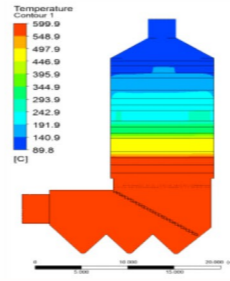
▼ 600 t/d Refuse Incineration Boiler in Xichang City

Technical Service

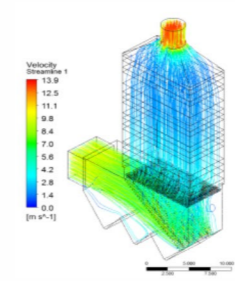
Boiler Technical Service



Numerical Model

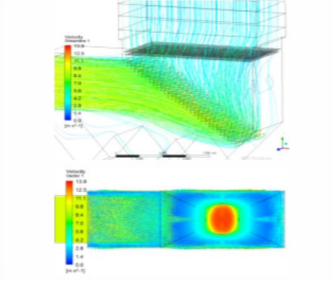


Temperature Field Analysis

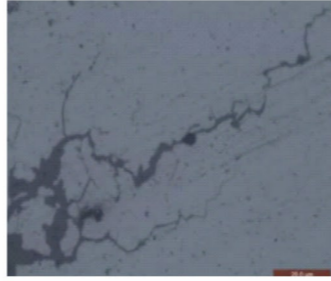


Velocity Field Analysis

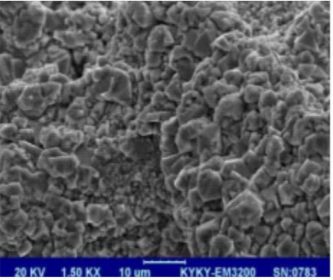
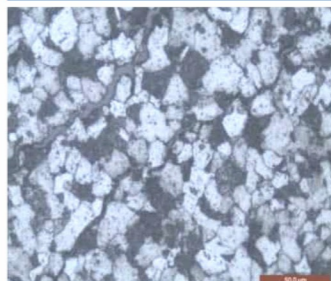
Settling Chamber Flow Field Analysis



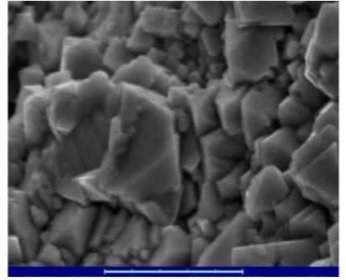
Failure Analysis – Metallographic Observation of Crack



Failure Analysis – Metallographic Observation of Crack



Failure Analysis – Scanning Electron Microscope of Fracture Surface



Failure Analysis – Scanning Electron Microscope of Fracture Surface

PRODUCT DISPLAY



Module of Heating Surface



Anti-corrosion Enamel Tube Panel



Converter Flue



Hot Air Boiler Part



Steam Drum



Water-cooled Wall



Serpentine Tube



QUALITY ASSURANCE



SERVICE STANDARDS

Provide customers with high-quality and efficient products and services;



PROFESSIONAL SUPREMACY

It provides the whole process monitoring service for customers' design, installation and maintenance, and uses the most professional detection means to focus on prevention and reduce failures. Regularly inspect the equipment for users, and issue professional analysis reports and scheme opinions.



CUSTOMER FIRST

Implement the "customer-centric" concept, operate the "customer-centric" after-sales service system, and quickly, accurately and effectively solve various professional problems for customers.



SOLEMN COMMITMENT

Respond in 8 hours and arrive at the site in 24 hours.

PARTNERS

For more than 40 years, we have been focusing on high-end equipment manufacturing, focusing on the R & D and manufacturing of boilers and pressure vessels, and extending the installation of boiler accessories. We are an energy-saving and environmental protection equipment service provider integrating design, manufacturing and installation services. At present, our business has spread across five continents and 16 countries, providing you with professional, efficient and high-quality products and services.

กลุ่มบริษัทน้ำตาลไทยรุ่งเรือง
THAI ROONG RUANG SUGAR GROUP



THANK YOU!

Brand and Quality Build the Brilliance of Industry